



Landfill Auditing

Auditing and Expert Technical Advice at New, Expanding, Operational and Closed Landfill Sites

Landfill is an important part of Australia's waste management infrastructure. The siting, management and rehabilitation of landfill sites requires a high level of design and management to ensure that the environment and community is protected and aspirations are met.

Regulatory authorities have developed state specific landfill guidelines to assist landfill owners and operators with design and rehabilitation of landfill cells; ongoing environmental management, day to day operation and long term aftercare.

Australian Environmental Auditors (AEA) has a strong team of EPA appointed/accredited environmental auditors and technical experts across the country, including one of Australia's foremost landfill gas experts available in house to clients.

Our extensive experience has shown that states, councils, independent owners and operators are increasing their diligence in design, operation and management through compliance with raising legislative and industry standards. As well as communities becoming more engaged in the environment and more active in opposing landfill sites.



Landfill Services

Landfill operators must demonstrate that their operation is in compliance with their licence. To assist in meeting these requirements, AEA offers the following landfill services:

- Operations audits
- Construction design verification of new cells
- Construction design verification of capping and rehabilitation
- Construction quality assurance audits of new cells
- Construction quality assurance audits of capping and rehabilitation
- Works approvals (Victoria)
- Hydrogeological assessments verification
- Environmental monitoring program verification
- Aftercare management plan verification
- Rehabilitation plan verification
- Risk assessment review
- Landfill gas and leachate management, control and assessment
- Landfill gas and leachate extraction systems
- Landfill operations, management and advisory support
- Expert witness

Victorian Landfill Sites

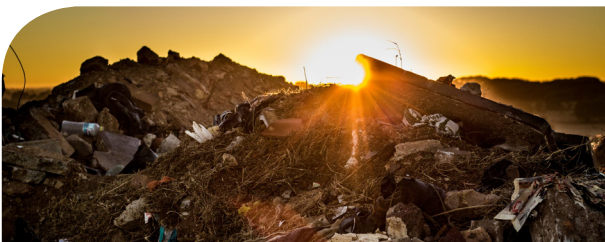
The Best Practice Environmental Management; siting, design, operation and rehabilitation of landfills guidelines (the Landfill BPEM; publication 788) issued by EPA Victoria, provides the regulatory framework and legal requirements for landfill as provided by the enactment of the Waste Management Policy (Siting, Design and Management of Landfills).

This provides guidance and legal requirements for managing all stages of landfill in Victoria.

Landfill licensing guidelines (publication 1323) assist landfill operators and environmental auditors with ongoing environmental management of the landfill and with gaining EPA approval for construction of new landfill cells at existing landfills.

Landfill licence holders (as are all licenses holders) are required to submit Annual Performance Statements (APSs) to EPA in accordance with licence guidelines 1322, stating that they have complied with their license or detailing any areas of license breaches.

Closed landfill guidelines (publication 1490) assist landfill operators with rehabilitation and aftercare management requirements for closed landfills and provides the framework for transitioning an operating landfill into the post closure aftercare phase. Which is managed through the replacement of the licence with a Post Closure Pollution Abandonment Notice (PC-PAN).



Landfill Experience

With extensive experience in all states and internationally, AEA can assist with new, expanding, operational or closed landfill management issues, including advice, verification of various reports and statutory auditing services.

With over 8 years in landfill auditing roles and over 20 in landfill operations and aftercare, along with the related environmental management, including landfill gas and leachate assessment and reporting, and construction of new cells, rehabilitation and capping, our thorough understanding of landfill allows us to maintain compliance with legislation while pursuing sustainable development.

AEA has a rich history of small to large scale projects, and is able to cater to projects of any size. We are confident in our ability to provide pragmatic, timely and cost effective auditing and technical services.



AEA Value & Delivery

AEA has an established company structure with experienced technical, administrative and editing staff to provide in-house support for our appointed/accredited auditors and technical experts. We have developed and refined procedures for the efficient delivery of projects.

We provide high level advisory services due to our strong background in landfill assessment, operation, remediation and management.

As a pure auditing and technical expert company we do not compete with environmental consultants in any assessment, design or remediation work.

AEA follows an open communication approach and is readily available to discuss the progress and development of projects with its stakeholders from beginning to end.